



NetworX

NetworX Series™

NX-1648E LCD Keypad

User's Manual

NX-1648E LCD Series

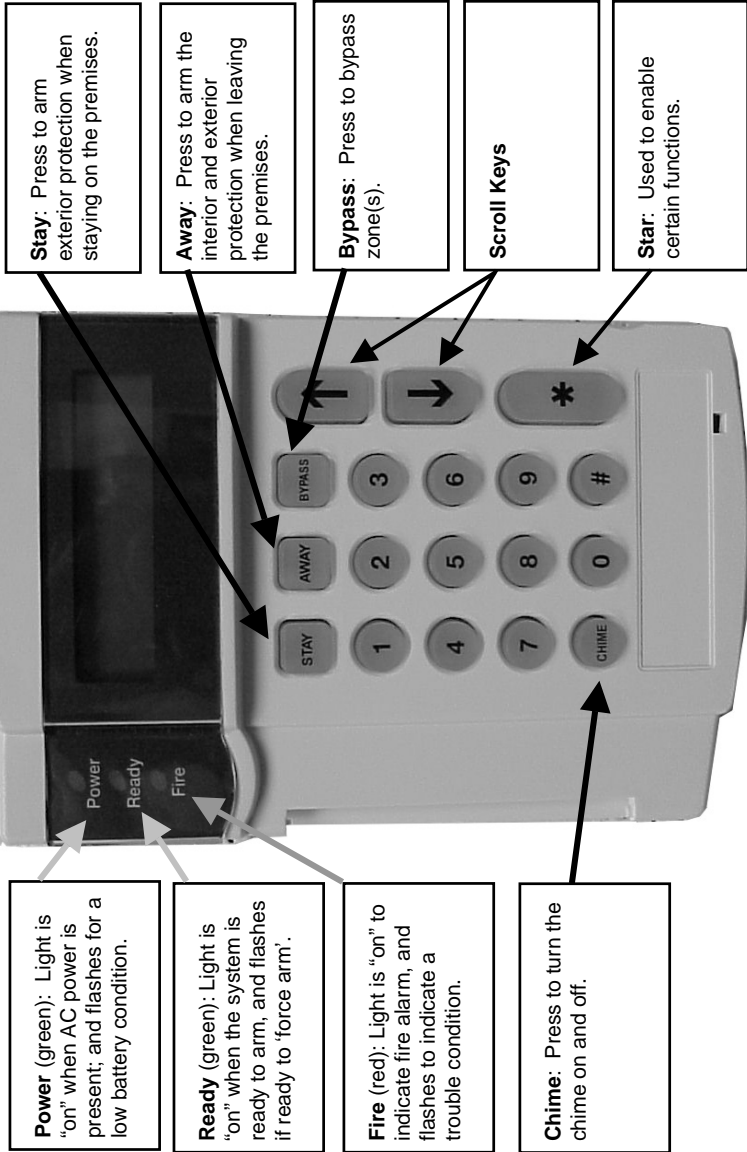


TABLE OF CONTENTS

GLOSSARY OF TERMS	3
UNDERSTANDING THE LIGHTS	4
KEYPAD FUNCTIONS	5
ARMING YOUR SYSTEM IN THE “AWAY” MODE.....	5
MAKING YOUR SYSTEM READY TO ARM	5
ARMING YOUR SYSTEM IN THE “STAY” MODE.....	6
USING THE QUICK ARM	7
DISARMING YOUR SYSTEM	7
BYPASSING ZONES.....	8
GROUP BYPASS	8
UNBYPASSING.....	9
EMERGENCY ACTIVATION KEYS.....	9
FUNCTION MENU.....	10
VIEW ZONE STATUS.....	10
SETTING THE KEYPAD TONE.....	11
VIEW ALARM MEMORY	11
TEST FUNCTION	11
DISPLAY TEST FUNCTION.....	11
LIGHT CONTROL FOR X-10 DEVICES.....	12
CHANGE LANGUAGES	12
CHANGING USER CODES.....	12
ASSIGNING USER CODE AUTHORITY LEVELS	13
RESET FUNCTION	14
READING THE EVENT LOG.....	14
ADJUSTING THE VIEW / BRIGHTNESS OF THE LCD	15
SETTING THE SYSTEM CLOCK.....	15
USING THE DOOR CHIME FEATURE	9
PARTITIONED SYSTEMS OPERATION	16
LIGHTS IN PARTITIONING MASTER MODE	16
DISPLAYS IN THE PARTITIONING MASTER MODE	16
KEYPAD CONTROL TONES (BEEPS)	19
SERVICE DISPLAY	20
APPENDIX A - EVENT LOG	22
EMERGENCY EVACUATION PLANS	24

THIS MANUAL IS FURNISHED TO HELP YOU UNDERSTAND YOUR SECURITY SYSTEM AND BECOME PROFICIENT IN ITS OPERATION. ALL USERS OF YOUR SECURITY SYSTEM SHOULD READ AND FOLLOW THE INSTRUCTIONS AND PRECAUTIONS IN THIS BOOKLET. FAILURE TO DO SO COULD RESULT IN THE SECURITY SYSTEM NOT WORKING PROPERLY. THIS BOOKLET SHOULD BE KEPT IN AN ACCESSIBLE LOCATION FOR THE LIFE OF THE SECURITY SYSTEM. IF YOU DO NOT UNDERSTAND ANY PART OF THIS MANUAL, YOU SHOULD NOTIFY YOUR INSTALLING COMPANY. READ THE ENTIRE MANUAL AND, IF POSSIBLE, PRACTICE ON THE KEYPAD CONTROL WHILE YOUR PROFESSIONAL INSTALLER IS ON SITE.

The SECURITY CONTROL can be turned on (ARMED) and off (DISARMED) by entering a 4 or 6 digit code into the Keypad Control, which is similar to a telephone keypad. If your Security Control has been so programmed, you may be able to turn on (ARM) your System by simply pressing the [STAY] or [AWAY] key. The system must always be disarmed using a 4 or 6 digit code. The LCD keypad includes lights and a 32-character liquid crystal display and a built-in electronic sounder. These provide specific information relating to the status of the security system which is described in the booklet. Understanding what the lights and sounds mean will help you to easily operate your system.

KEEP IN MIND, THE LEVEL OF SECURITY YOU WILL OBTAIN WITH THIS SYSTEM RELATES SPECIFICALLY WITH TWO MAJOR FACTORS:

1. The quantity, quality, and placement of security devices attached to this system.
2. The knowledge you have of the security system and how that knowledge is utilized in a weekly test of the complete system.

YOU SHOULD BE AWARE OF THE FOLLOWING FACTS WHEN PREPARING A SAFETY/SECURITY PLAN FOR YOUR HOME/BUSINESS.

1. Your security system is an electronic device and is subject to failure or malfunction. Do not rely on it as your single source of security.
2. Your system should be tested weekly.
3. Your system will not work without power.
4. Warning devices will need to be loud enough, wired correctly, and properly placed to provide notification of an alarm event.
5. Smoke and heat detectors may not detect heat and smoke in all situations.
6. Use qualified security professionals to install and maintain your security system.
7. It may be possible to arm the security system without the backup battery connected. Your periodic test should be done with A.C. Power removed to verify the battery is connected and adequately charged.
8. Care should be taken to plug in and restrain the A.C. Transformer after testing.

PLEASE READ THE FOLLOWING INFORMATION AND INSTRUCTIONS CAREFULLY BEFORE OPERATING YOUR SECURITY CONTROL SYSTEM. IF YOU DO NOT UNDERSTAND ANY PORTION OF THIS MANUAL, OR IF YOU HAVE ANY QUESTIONS ABOUT YOUR SYSTEM, CONTACT THE INSTALLING COMPANY.

GLOSSARY OF TERMS

- Abort Delay:** An option that allows a delay in reporting to the central station.
- Authority Level:** The level of access an individual has when using an alarm panel.
- Central Station:** Location where alarm data is sent during an alarm report.
- Chime Feature:** An option that allows the keypad to sound a ding-dong whenever an entry/exit door is opened.
- Codes:** Can be either User Codes (relating to a person) or Function Codes (a toggle switch to turn specific functions on/off). **NOTE: A system may have either four 4-digit codes or six 6-digit codes, but not a mixture of the two.**
- Duress Code:** An option that allows a special code to be sent to the central station that indicates the alarm system is being operated under duress.
- Forced Arming:** An option that allows the system to be turned on (ARMED) with one or more zones open. A system that is ready to be “force armed” will flash the *ready light*. **NOTE: Those zones that are not ready will not create an alarm.**
- Function Code:** A Function Code is either a four (4) or six (6) digit code that has been programmed by the installer to operate a device.
- Group Bypass:** An option that allows the user to bypass multiple zones with a single operation.
- Instant/Delay:** An option that allows an instant alarm condition for Entry/Exit doors, or grants a delay to allow someone to enter/exit the building without an alarm or before entering a user code to disarm.
- Master Code:** A master arm/disarm code that can program other user codes.
- Partitioned System:** A system divided into multiple areas in which its own user or users control each area.

- Perimeter:** The outer edge of the protected area.
- Quick Arm:** An option that allows you to turn on (ARM) the security system by pressing either the [STAY] or [AWAY] key on the keypad control (for ARMING only) as programmed by the installing company.
- User Code:** A 4- or 6-digit entry used to arm or disarm the system.

UNDERSTANDING THE LIGHTS

- Fire Light** A steady *fire light* means a fire zone has been faulted. A rapidly flashing *fire light* means that a fire zone is in a trouble condition.
- Power Light** The *power light* is on if the primary power is on. The *power light* will flash if the system has a low battery condition.
- Ready Light** The *ready light* is “on” when the system is ready to arm and “flashes” if ready to force arm. The *ready light* is “off” when the system is not ready to arm because of a zone(s) being faulted.
- Instant Message** The LCD display will read “Instant” when the entry/exit door(s) have no delay. (See “Arming System in Stay Mode”, page 6.) The doors can be changed from instant to delay (toggled) by pressing the [STAY] key when the system is armed.

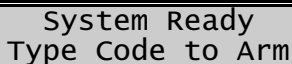
KEYPAD FUNCTIONS

ARMING YOUR SYSTEM IN THE "AWAY" MODE

AWAY is utilized when the user is going away from the premise and wants the interior protected. Listed below are the steps to arm in the AWAY Mode:

Step 1 Close all protected doors and windows.

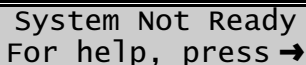
- *Ready light* will be on or flashing when all protected zones and sensors are secure.



System Ready
Type Code to Arm

NOTE: If any zones are bypassed, a sensor in that zone can be violated without affecting the *ready light*.

- The security system will not arm if the *ready light* is off. Refer to "Making Your System Ready to Arm".



System Not Ready
For help, press →

- If the *power light* is off, you have no AC power. Restore power if possible. If not, contact the installing company.

Step 2 Enter your 4 or 6 digit user code to arm the system.

- You may now leave the building.



System Armed
All Zones Secure

MAKING YOUR SYSTEM READY TO ARM

If the *ready light* is not on or if it is flashing, a zone is not secure. To identify this zone, use the scroll keys ▲ ▼ to the right of the display to browse through the zones that are not normal. If you wish to bypass or unbypass one of these zones, press the [BYPASS] key while that zone is being displayed. When finished viewing the zones, press the # key to return to the code entry screen.

ARMING YOUR SYSTEM IN THE “STAY” MODE

STAY is utilized when the user is inside the premise and wants protection around the perimeter. The steps to arm in the STAY Mode are as follows:

Step 1 Close all protected doors and windows.

- *Ready light* must be on or flashing (force armed) when all protected zones and sensors are secure. **NOTE: If any zones are bypassed, a sensor in that zone can be violated without affecting the *ready light*.**
- The security system will not arm if the *ready light* is not on or flashing.
- If the *power light* is off, you have no AC power. Restore power if possible. If not, contact the installing company for service.

System Ready
Type code to arm

Step 2 Enter your 4 or 6 digit user code. (Optional, if programmed.)

- If “Auto Bypass” is enabled, all interior zones will be bypassed if you do not leave through a designated entry/exit door. If Auto Bypass is enabled, omit Step 3.
- When “Auto Instant” is enabled, if you do not leave through a designated entry/exit door, the display will read “*Instant*”, indicating that the entry/exit doors no longer have an entry delay. If “Auto Instant” is enabled, omit Step 4.

Step 3 Press the [STAY] key.

Step 4 To toggle from a “delayed entry” mode to an “Instant” mode, press the [STAY] key again.

System Armed
Instant

- The LCD display will read “Instant” meaning the entry/exit doors do **NOT** have an entry delay.

USING THE QUICK ARM

The Quick Arm feature may be used if it is enabled. Quick Arm will allow the user to arm the security system in the AWAY mode by pressing the [AWAY] key. The system can be quick armed in the STAY mode by pressing the [STAY] key. This feature is used for ARMING ONLY, and will not disarm the security system. This is ideal for a maid or baby sitter code, etc.

CHANGING MODES WHILE YOUR SYSTEM IS ARMED

- Step 1 Pressing the [STAY] key will turn on/off (toggle) a delay on Entry/Exit doors. The “Instant” message will toggle on the LCD display.
- Step 2 (Optional, if programmed.) Press the [BYPASS] key at this time to turn on/off (toggle) all designated interior zones. If all interior zones are not bypassed, the *stay light* will extinguish.

IMPORTANT!

An alarm will be created if the “Instant” message is ON at this time and you re-enter the building. You may re-initiate an entry/exit delay by pressing the [STAY] key again. The “Instant” message will disappear.

DISARMING YOUR SYSTEM

When you enter the protected area through one of the designated Entry/Exit doors, the keypad control will sound a continuous tone for the duration of the entry delay time, or until you enter a valid code.

Type code to
Disarm

Step 1 Enter a valid user code.

Step 2 The tone will stop. The security system is now DISARMED. If

a valid code is not entered before the end of the entry delay, an alarm will occur.

BYPASSING ZONES

If you wish to bypass one or more zones, this must be done while the system is in the disarmed state. If the zone is not known, refer to Procedure #2.

Procedure #1 If you know the number of the zone to bypass, use the following:

- Step 1 Press the **[BYPASS]** key.
- Step 2 When the LCD prompts for a code (optional, if programmed), enter your user code.
- Step 4 Enter the zone you wish to bypass. (Example: Press ⑥ for zone 6 or ①② for zone 12.)
- Step 5 Press the **[BYPASS]** key again. The zone is now bypassed.
- Step 6 Repeat steps 4 and 5 for any other zone(s) that need to be bypassed.
- Step 7 Press the **[BYPASS]** key again OR press **#** to exit the Bypass Mode. Press **▲** or **▼** to display all bypassed zones. Press **#** to exit this viewing mode.

Procedure #2 If you do not know the number of the zone you wish to bypass, use the following steps:

- Step 1 Press ***** **▲** The description for zone 1 will be displayed.
- Step 2 Use the **▲** **▼** scroll keys to browse through the custom descriptions for the zones in this system.
- Step 3 To bypass or unbypass a specific zone, press the **[BYPASS]** key while that zone is displayed.
- Step 4 When finished, press **#** to return to the code entry screen.

GROUP BYPASS

By pressing the **[BYPASS]** key, followed by the **①** key, then the **[BYPASS]** key again, all zones that are designated as group bypass zones will be bypassed. Press the **[BYPASS]** key again to exit group bypassing.

UNBYPASSING

To manually unypass zones, perform the bypassing procedure on a zone that is already bypassed. **NOTE:** All zones will automatically be unypassed each time the system is disarmed.

USING THE DOOR CHIME FEATURE

The door chime is turned on or off by pressing the [CHIME] key. Each press of the [CHIME] key will toggle the chime feature on/off and produce a momentary ding-dong sound.

EMERGENCY ACTIVATION KEYS

- You must hold these keys for 2 seconds to activate these functions.
- Your system may not be programmed for these activation keys.
- You should press these keys only in an emergency situation that requires response by emergency personnel. If your system is programmed for these functions, the following reports can be sent.

FIRE

Press ① + ③ together for 2 seconds.

This can activate the fire alarm when pressed for two seconds. If your system is connected to a monitoring center, an emergency report could be sent to that center.

AUXILIARY Emergency

Press ④ + ⑥ together for 2 seconds.

This can activate the auxiliary alarm when pressed for two seconds. If your system is connected to a monitoring center, an emergency report could be sent to that center.

POLICE (Panic/Hold-Up)

Press ⑦ + ⑨ together for 2 seconds.

This can sound a local audible alarm when pressed for two seconds. If your system is connected to a monitoring center, an emergency report could be transmitted to that center. **NOTE:** Some Panic/Hold-Up alarms are programmed to be silent at the protected site while reporting an alarm to the monitoring center. Check with your installing company to determine how your security system will respond to the Panic/Hold-Up activation.

FUNCTION MENU

The functions listed below are found in the Function Menu.

Step 1 Press ***** The display will now begin scrolling through a list of functions and the corresponding numbers associated with those functions.

Step 2 Press the number listed on the display in order to access that particular function. **Hint:** If you already know the function numbers simply press ***** followed by the function number.

The following list of menu selections will scroll automatically. **NOTE:** Some of the functions are not listed because they are installer level functions. Each time the ***** key is pressed the next menu item will be displayed. Press **#** to exit this menu.

Select an Option
Press * for Help

This is a sample of the display. The list below reflects the available functions.

↓=Zone Review
0=Set Tone
1=Master Mode
2=Service Check
3=Alarm Memory
44=Test

45=Display Test
46=Light Control
49=Español
5=User PIN
6=User Authority
7=Detector Reset

90=Log Review
91=View Settings
97=Set Date/Time
CHIME=walk Test
EXIT=Silent Exit

VIEW ZONE STATUS

Step 1 Press ***** **▲**. The LCD Screen will display the zone status.

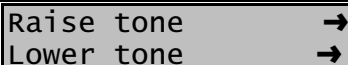
Step 2 Use the up and down scroll keys to browse through the descriptions. The LCD Screen will display the list of all zones in sequential order by zone number.

Step 3 Press **#** to exit this function.

SETTING THE KEYPAD TONE

Step 1 Press ***** **0** . Keypad is now in the “Adjust Tone” mode.

Step 2 Press **▲** located on the right side of the display to adjust the keypad sounder to higher tones.



Raise tone →
Lower tone →

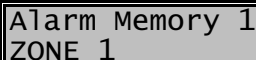
Step 3 Press **▼** to adjust the keypad sounder to lower tones.

Step 4 When the desired tone is reached, press **#** to set this tone and exit from the “Adjust Tone” mode.

VIEW ALARM MEMORY

Step 1 Press ***** **3** to display the zone(s) on the keypad that created the last alarm.

Step 2 The LCD Screen will display the zone description for those zones.



Alarm Memory 1
ZONE 1

Step 3 Press **#** to exit the alarm memory.

TEST FUNCTION (Optional, if programmed)

If programmed, this function will perform a battery test, communicator test, and/or a siren test. No alarms will be sent, and no reports will be sent unless a communicator test is performed, in which case a test signal will be sent.

Step 1 Press ***** **4** **4** . The test will be performed as programmed.

Step 2 If the siren test is performed, enter a user code to silence the siren.

DISPLAY TEST FUNCTION

This function will perform a test of the LCD display. No alarms or reports will be sent.

Step 1 Press ***** **4** **5** . The test will be performed and all of the display pixels and LED indicators will flash until another key is pressed.

LIGHT CONTROL FOR X-10 DEVICES (Optional, if programmed)

This menu allows you to control up to ten X-10 devices from each keypad.

- Step 1 Press ***** **4** **6**. The LCD screen will prompt you to "Select Light Number 0 - 9".
- Step 2 Enter the number of the X-10 device you want to control. The LCD screen will show the light number on the left. On the right side of the display it will prompt you to turn the light (X-10 device) "On" or "Off".
- Step 3 Press **▲** to turn the X-10 device "On" or press **▼** to turn "Off".
- Step 4 The LCD screen will again prompt to "Select Light Number 0 - 9".
- Step 5 Repeat Steps 2 and 3 until complete.
- Step 6 Press **#** to exit from the X-10 menu.

CHANGE LANGUAGES

This function allows you to switch between the two languages programmed in your keypad. **NOTE:** You must exit any other function mode before attempting to change languages.

- Step 1 Press ***** **4** **9**. The LCD keypad is now toggled to the second language.
- Step 2 Repeat Step 1 to revert to the first language.

CHANGING USER CODES

- Step 1 Press ***** **5**. The LCD Screen will prompt for a code.
- Step 2 Enter [master code]. The LCD Screen will prompt for a user number. **NOTE: For partitioned systems, if you are changing the code of another person, you must have access to all partitions, or at least all of the partitions to which the other person has access.**
- Step 3 Enter the 2-digit (applies to NX4/6/8) or 3-digit (applies to NX8E) user number. Always use leading zeros when necessary, i.e. "004" for user number 4.
- The LCD keypad will display the current code for this user. Stars (*) represent blanks.

NOTE: To delete a user code, press [*]-[*]-[*]-[*] for a 4-digit code or [*]-[*]-[*]-[*]-[*]-[*] for a 6-digit code.

- Step 4 Enter the new user code for that individual. If you are changing the current code, you may use the up and down scroll keys to select the digit to change and enter the correct number. If it rejects the code because of duplication or such, the sounder will beep 3 times.
- Step 5 If another user code needs to be programmed, return to step 3 and enter the user code.
- Step 6 To exit Code Programming, press **#** while the LCD screen is prompting for a new user.

ASSIGNING USER CODE AUTHORITY LEVELS

Assign authority levels to users by following the steps below. Assign user codes before assigning authority levels.

NOTE: You must have authority to the partition you wish to add or remove from another person's authority.

- Step 1 Press ***** **6** . The LCD Screen will now prompt for a code.
- Step 2 Enter [**master code**]. The LCD Screen will prompt for a user number.
- Step 3 Enter the 2-digit (applies to NX4/6/8) or 3-digit (applies to NX8E) user number. Always use leading zeros when necessary, i.e. "004" for user number 4. The LCD will prompt for the following attributes:

PROMPT	
Outputs used?	← DO NOT CHANGE THIS SEGMENT!
Open / Close Rprt? Bypass enable? Arm / Disarm?	(These are for use by a professional installer only.)
Master code? Sched arm only? Arm only? Reserved	0=No 1=Yes Your keypress will apply to the user code you entered in Step 3.
Output 4 ? Output 3 ? Output 2 ? Output 1 ?	If these messages appear on the LCD screen, press the [*] key until you return to the prompt for the user code or until you exit this adjust mode.

- Step 4 **NOTE:** The LCD will now display all of the partitions to which this user has access. If you wish to remove a partition, press the partition number on the keypad, and the display will mark that partition with a (-) hyphen indicating access has been removed. If you wish to re-establish user access to the partition, press the partition number again.
- Step 5 Press ***** to save the data. The LCD will then prompt you for the next user code.
- Step 6 If another user code needs to be programmed, return to Step 3. If not, press **#** to exit this feature without saving the data.

RESET FUNCTION

This function is used to reset Smoke Detectors, Zone Troubles, and Zone Tamper.

Step 1 Disarm the system if it is not already disarmed.

Step 2 Press ***** **7** . Resets have now been performed.

Step 3 If the keypad begins beeping, the reset did not execute properly. Enter your code to silence the keypad. Wait a few minutes and repeat step 2 to attempt another reset. If the keypad still beeps after repeated attempts, please contact your installer.

READING THE EVENT LOG

The control panel has an event log that can be retrieved using a master code. This log contains a listing of the events along with date, time, and partition where the event occurred.

Step 1 To view the log, press ***** **9** **0** . The LCD screen will prompt you for a code.

Step 2 Enter your master code. The LCD screen will now show the most recent event.

Step 3 To view the events from most recent to the oldest, press **▼** .

Step 4 To view the events from the oldest to the newest, press **▲** .

The display contains the following information.

Event	→	Open	75	←	User or Zone ID
Date	→	9/25	17:57	←	Indicates partition and * indicates an event not reported
(Month/Day)			↗ Time shown in 24-hour format		

This screen shows an opening of Partition 3 on September 25th at 5:27 p.m. by user 75. The [*] shows that this event is not programmed to be reported to the central monitoring station. Refer to Appendix A on page 22 for a list of possible log messages.

ADJUSTING THE VIEW / BRIGHTNESS OF THE LCD

- Step 1 Enter *** 9 1**. The LCD Screen will prompt for a code.
- Step 2 Enter **[master code]**. The LCD will now prompt you to raise or lower the view.
- Step 3 Use **▲ ▼** to raise or lower the viewing angle of the text.
- Step 4 To advance to the Brightness option, press *****. The LCD will prompt you to brighten or dim the LCD lighting. Use the scroll keys again to adjust to desired brightness.
- Step 5 When completed, exit by pressing *****.

SETTING THE SYSTEM CLOCK

- Step 1 Enter *** 9 7**. The LCD Screen will prompt for a code.
- Step 2 Enter **[master code]**. The time and date will be displayed with the current hour flashing.
- Step 3 Use **▲ ▼** to select the proper hour.
- Step 4 Press ***** to move to the minutes, day of week, date, month, and year.
- Step 5 Repeat Steps 3 and 4 until the entire time and date are set.

PARTITIONED SYSTEMS OPERATION

This system is is not partitioned.

If your system is multi-partitioned and the keypad resides in one partition, your keypad will provide the status of the zones in your partitioning by using the screen messages described earlier in this manual. The Master Mode of operation allows you to temporarily access any partition (providing your code is authorized) within the system and to perform functions in other partitions. Read this entire manual to help you understand the different screen messages that will be displayed from your keypad.

NOTE: * 1 will *temporarily* access the Master Mode. The keypad will revert back to its assigned partition 60 seconds after a keypress, or 10 seconds without a keypress. Press # to exit this mode.

LIGHTS IN PARTITIONING MASTER MODE

- **READY** will illuminate if ALL partitions are "Ready". The *ready light* will flash if all areas are Ready or Force armable.
- **FIRE** will illuminate if ANY one area has a Fire condition. The *fire light* will flash if ANY area has a Fire Trouble condition.
- **POWER** will illuminate if the primary power is connected to the NX-8 control panel. It will flash if the system has a low standby battery condition.
- **SOUNDER** will sound if ANY area has the sounder on. This includes Entry delay, Exit delay, Chime, and Alarm.

DISPLAYS IN THE PARTITIONING MASTER MODE

■ ARMED and READY STATUS

The LCD screen will display the Armed and Ready status of ALL eight (8) partitions if any or all of the areas is armed or not ready.

Ready	12345678
Armed	1234-678

This display is reflecting all 8 areas are Ready, and Area 5 is disarmed.

NOTE: If a number is flashing on the Armed line, that area is armed *Instant*. If a number is flashing on the Ready line, that area is ready to be *Force Armed*.

<p style="text-align: center;">System Ready Type code to arm</p>
--

If ALL areas are disarmed and ready to arm, this display will appear on the LCD screen.

■ ARMING AND DISARMING MULTIPLE PARTITIONS

To arm/disarm multiple partitions, enter a code that has arm/disarm authority for ALL of the partitions to be armed/disarmed. The following display will appear on the LCD screen.

12-45-78	Disarm	→
--3 67-	Arm	→

The numbers on the **TOP LINE** represent the disarmed areas to which this code has access.

The numbers on the **BOTTOM LINE** represent the areas that are armed.

Refer to the following table for possible conditions.

LCD DISPLAY FOR AREA TOP LINE OVER BOTTOM LINE	CONDITION
Blank Blank	Area Not used or Authorized
Dash (-) Dash (-)	Area Not Ready
Flashing Area # Dash (-)	Area Ready to Force Arm
Dash (-) Flashing Area #	Area Armed Instant
Area # Dash (-)	Area Disarmed & Ready to Arm
Dash (-) Area #	Area is Armed

- To disarm *all* of these areas, press ▲.
- To arm *all* of these areas, press ▼.
- To toggle a single area between the armed and disarmed conditions, press [*] [Area number]. For example: If Area 4 is armed, [*] [4] will disarm Area 4. If Area 4 is disarmed, [*] [4] will arm it.
- Press [STAY] during the exit delay to bypass all interior zones in the exit delay.
- To control the individual areas, refer to the following section.

■ OPERATING INDIVIDUAL AREAS IN THE MULTI-PARTITION MODE

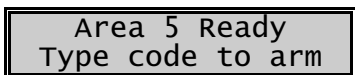
Enter a code that is a valid arm/disarm code for the area you wish to operate. The following display will appear on the LCD screen.



Only the areas authorized by this code will appear.

To toggle between the armed and disarmed states of an individual area, press [*] [Area number].

To operate an individual area, enter the number of the partition you wish to operate. The LCD keypad will now operate as a single area keypad. All keys and functions entered will affect this individual partition only. The lights and display represent the status of that partition only. The word "System" will be replaced with the word "Area #". The following is an example of this feature. Press # to exit.



Area 5 is selected and Area 5 is ready to arm. To exit the individual partition mode, enter # #

■ SILENCING ALARMS IN THE MULTI-PARTITION MODE

If the keypad is sounding an alarm or the siren is running, it can be silenced by entering a code with the authority for the area(s) that are in alarm. **NOTE:** The [AWAY], [BYPASS], and [STAY] keys will only work if an individual partition is selected.

KEYPAD CONTROL TONES (BEEPS)

A sounder is built into the keypad and may sound for any of the following reasons:

- Beeps for all keypresses.
- Sounds a continuous tone during the Entry delay time.
- Pulses when a day zone is violated while the system is disarmed.
- Pulses when a FIRE zone has a trouble condition.
- Pulses when the armed status changes and the AC power is off.
- Beeps 3 times for trying to arm with the “READY” light off, if “FORCE ARMING” has not been selected.
- Beeps 1 second for the ‘CHIME” feature.
- Beeps 1 second at the end of the exit delay.
- Beeps to indicate telephone line fault if selected.
- Beeps during an exit delay; beeps rapidly for the last 10 seconds of an exit delay; and beeps 1 second at the end of the exit delay.
- Pulses when one or more of the following conditions are detected: Zone or Box Tamper, Low Battery, AC Power Fail, or Expander trouble.
- Beeps 3 times every minute indicating a low battery or missing transmitter is detected (if wireless device is in system). Entering code will suppress the sounder for 12 hours.

Entering a valid code will silence the keypad sounder when it is pulsing. The arm/disarm state of your system will not change when entering a code to silence a pulsing keypad sounder. Please contact your installer if a trouble condition exists.

SERVICE DISPLAY

The following message will be displayed if the security system requires service. Call your service provider promptly if this message is observed.

If you see this display, press ***** **2**. One or more of the following fault messages will be displayed. Use

Service Required
Type *2 for help

▲ ▼ to browse through the messages. Press **# #** to exit.

Control
Box tamper

(Optional) The Box Tamper circuit has activated.

Control
Fail to Comm.

The control attempted to communicate a message to the Central Station, but was unsuccessful.

Control
Ground fault

A short to ground has been detected on a control circuit.

Control
Loss of time

Your system has lost total power and needs the clock reset.

Control
Low Battery

The standby battery is low.

Control
Over-current

A short circuit of a control's power supply has occurred.

Control
Phone trouble

The phone line connected to the control is not operating properly.

Control
Power trouble

The main power to your system is not on.

Control
Siren trouble

Open circuit has occurred on the bell or siren circuit.

Expansion Aux. comm. fail	An auxiliary reporting device has failed to communicate.
Expansion Box tamper	A box containing an expansion device has been opened.
Expansion Low Battery	An expansion power supply has a low battery.
Expansion Over-current	A short circuit of an expansion devices' power supply has occurred.
Expansion Power trouble	The main power to an expansion power supply is not on.
Expansion Siren trouble	Open circuit has occurred on the bell or siren circuit of the expander
Expansion RF Jammed	A radio receiver is being jammed. (Not applicable to all controls.)
Expansion Trouble	An expansion device or keypad is not reporting to the control panel.
Zone Lost, Press *	A wireless or multiplexed zone device is not reporting to the control. Press [*] to identify the zone.
Zone Low Batt, Press *	A wireless device has a low battery. Press [*] to identify the zone.
Zone Tamper, Press *	A zone is tampered. Press [*] to identify the tampered zone.
Zone Trouble, Press *	A zone is experiencing some form of trouble (probably wiring). Press [*] to identify the zone.

APPENDIX A - EVENT LOG

NOTE: Your system may not have all of the features listed in this table.

DISPLAY		DESCRIPTION
TXlobat	Transmitter Low Battery	The transmitter has a low battery.
ZN Lost	Zone Lost	A wireless or multiplexed zone device is not reporting to the control.
Duress	Duress	The control has been armed or disarmed with a Duress code.
Man Fire	Manual Fire	Keypad "Fire" has been activated.
Aux 2	Auxiliary 2	Keypad "Medical" has been activated.
Panic	Panic	Keypad "Panic" has been activated.
KP Tamper	Keypad Tamper	The keypad tamper has been activated.
BoxTamp	Box Tamper	The box tamper circuit has been activated.
AC Fail	AC Fail	AC failure has been detected.
OverCur	Over Current	A short circuit of a power supply has occurred.
Srn Tamp	Siren Tamper	A siren or speaker tamper has been detected.
Tel Flt	Telephone Fault	A telephone fault or tamper has been detected.
Exp Trb	Expansion Trouble	An expansion device or keypad is not reporting to the control.
Log Full	Log Full	The event log is full. Old events will be pushed out as new ones enter the log.
Open	Open	Reports user number, date, time and partition of opening.
Close	Close	Reports user number, date, time and partition of closing.
Exit Err	Exit Error	Entry/Exit zone was faulted at the instant the exit delay expired.
Rec Close	Recent Close	An alarm occurred within 5 minutes after the control was armed.
Autotest	Auto Test	Sending a communicator test at a specified interval.
Start Prog	Start Programming	Local programming is started.

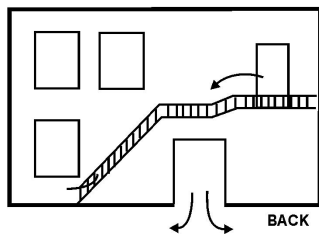
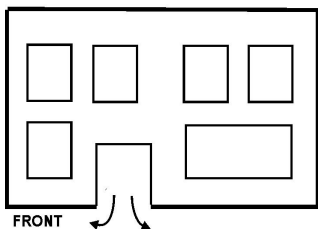
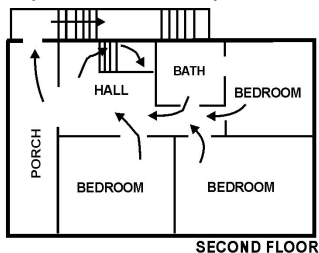
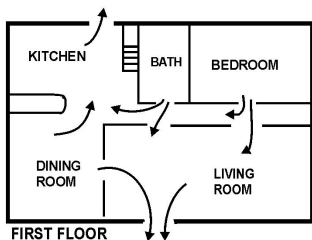
DISPLAY		DESCRIPTION
End Prog	End Programming	Local programming is ended.
Start Dnld	Start Download	Download session is started.
End Dnld	End Download	Download session is ended.
Cancel	Cancel	System is disarmed and the Cancel button was pressed within 5 minutes of an alarm.
Gnd Flt	Ground Fault	A short to ground has been detected.
Man Test	Manual Test	Bell and/or communicator test while system is in disarmed condition.
Re-exit	Re-Exit	The exit delay has been re-started without disarming the system.
Output Trip	Output Trip	A trip has occurred on an expander auxiliary output.
Data Lost	Data Lost	Communication of a signal has failed (log only event).
Walk-test	Walk-Test	A zone "Walk-Test" mode has been activated.
End Test	End Test	Test has been ended.
Cross-Trip	Cross Trip	The first zone of a cross zone has been tripped (log only).
Expansion Event	Expansion Event	An expansion module created an undefined event.
Partial Arm	Partial Arm	Reports a closing in the stay mode.
Listen In	Listen In	A listen in function has been activated.
Service Start	Service Start	Technician is on site.
Service End	Service End	Technician is off site.
Code Entry	Code Entry	A code has been entered.
First Open	First Open	Reports when the first partition is disarmed.
Last Close	Last Close	Reports when the last partition is armed.
Sprnklr	Sprinkler	Instant sprinkler supervisory report
Clock Set	Clock Set	Clock has been reset.
RF Jammed	RF Jammed	A wireless expansion module is jammed
CleanMe	CleanMe	A smoke detector requires cleaning.

EMERGENCY EVACUATION PLANS

An emergency evacuation plan should be established for an actual fire alarm condition. For example, the following steps are recommended by the National Fire Protection Association and can be used as a guide in establishing an evacuation plan for your building.

Draw up a floor plan of your home. Show windows, doors, stairs, and rooftops that can be used for escape. Indicate each occupant's escape routes. Always keep these routes free from obstruction. Determine two means of escape from each room. One will be the normal exit from the building. The other may be a window that opens easily. An escape ladder may have to be located near the window if there is a long drop to the ground below. Set a meeting place outdoors for a headcount of the building occupants. Practice escape procedures. In a home, sleep with bedroom door closed; this will increase your escape time. If you suspect fire, test the door for heat. If you think it is safe, brace your shoulder against the door and open it cautiously. Be ready to slam the door if smoke or heat rush in. Practice escaping to the outdoors and meeting in an assigned spot. Call the Fire Department from a neighbor's phone.

NOTE: After the installation of your Security System has been completed, notify your local Fire and Police Departments to give them your name and address for their records. Early warning fire detection is best achieved by the installation of fire detection equipment in all rooms. This equipment should be installed in accordance with the National Fire Protection Association's Standard 72. For additional information write the National Fire Protection Association, Batterymarch Park, Quincy, MA 02269.





GE Interlogix

**NX-1648E USERS MANUAL
NX1648EUA02 REV A (12-2002)**